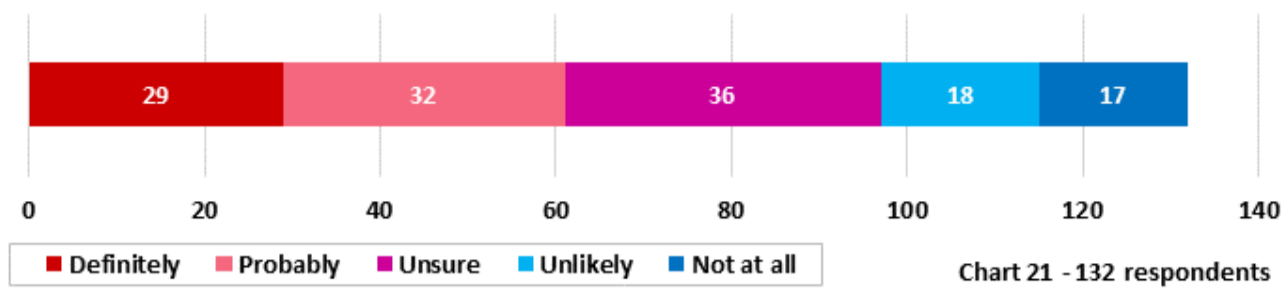




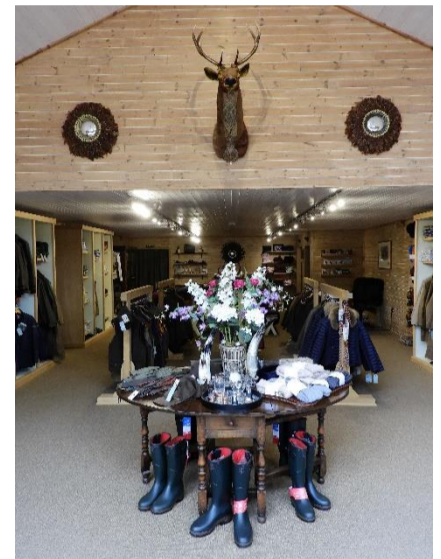
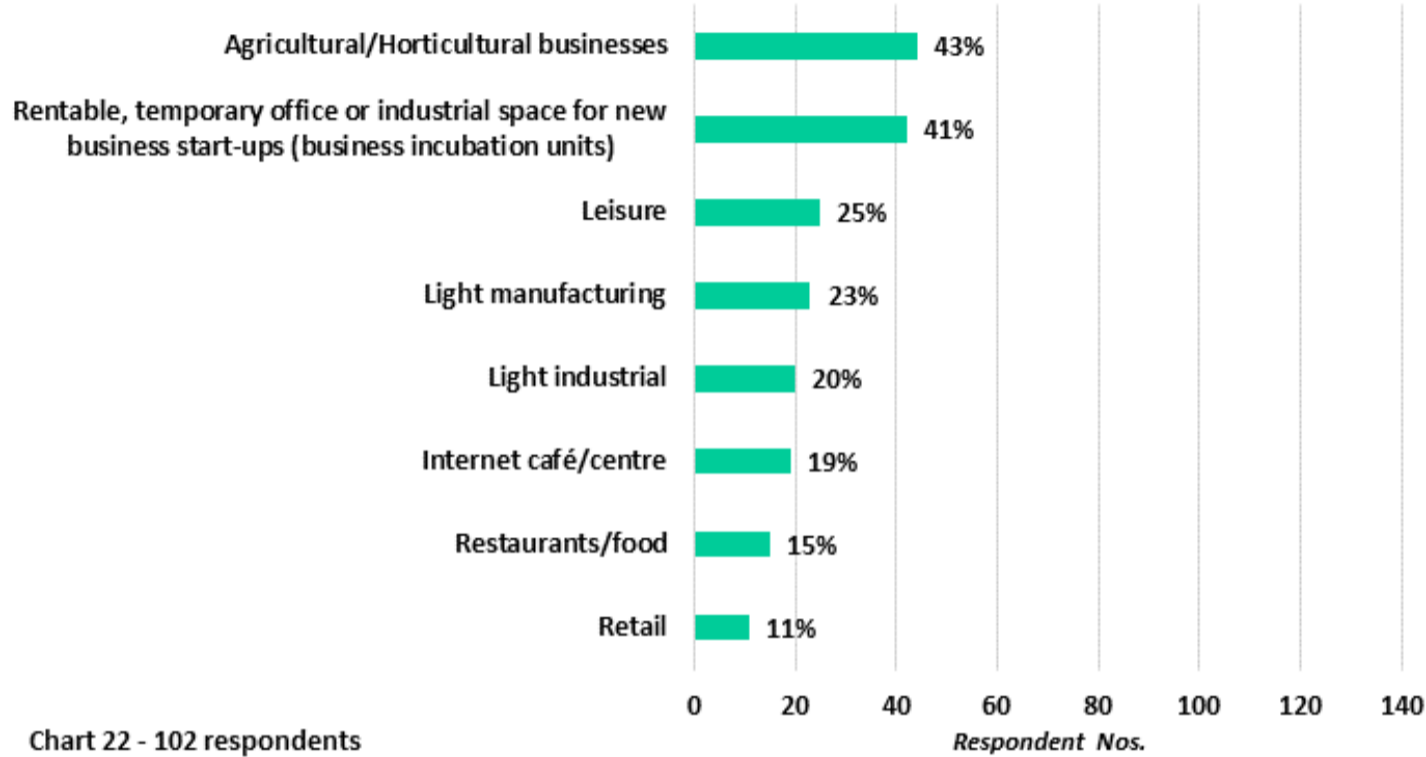
# Business and Employment



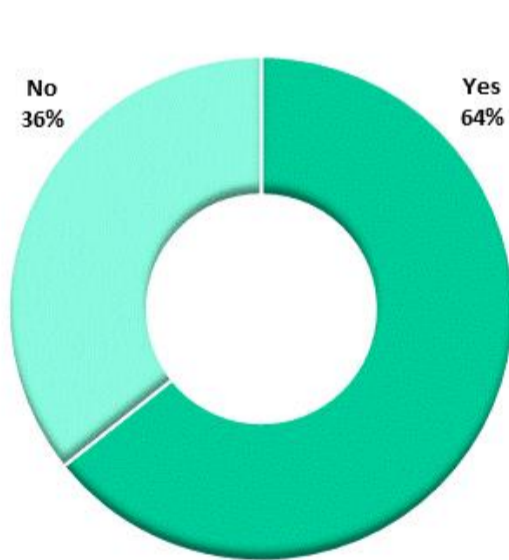
Should the Neighbourhood Plan encourage business/commercial development that provides local employment?



What kind of additional workspace do you think would be most useful to provide in the Parish? (tick any that apply)



Would you support farms wishing to diversify into other businesses e.g. renewable energy, tourism, business units?



If you run a business in commercial premises in the Parish or from your home, do you expect to need additional workspace outside your home in the next 5 years?

